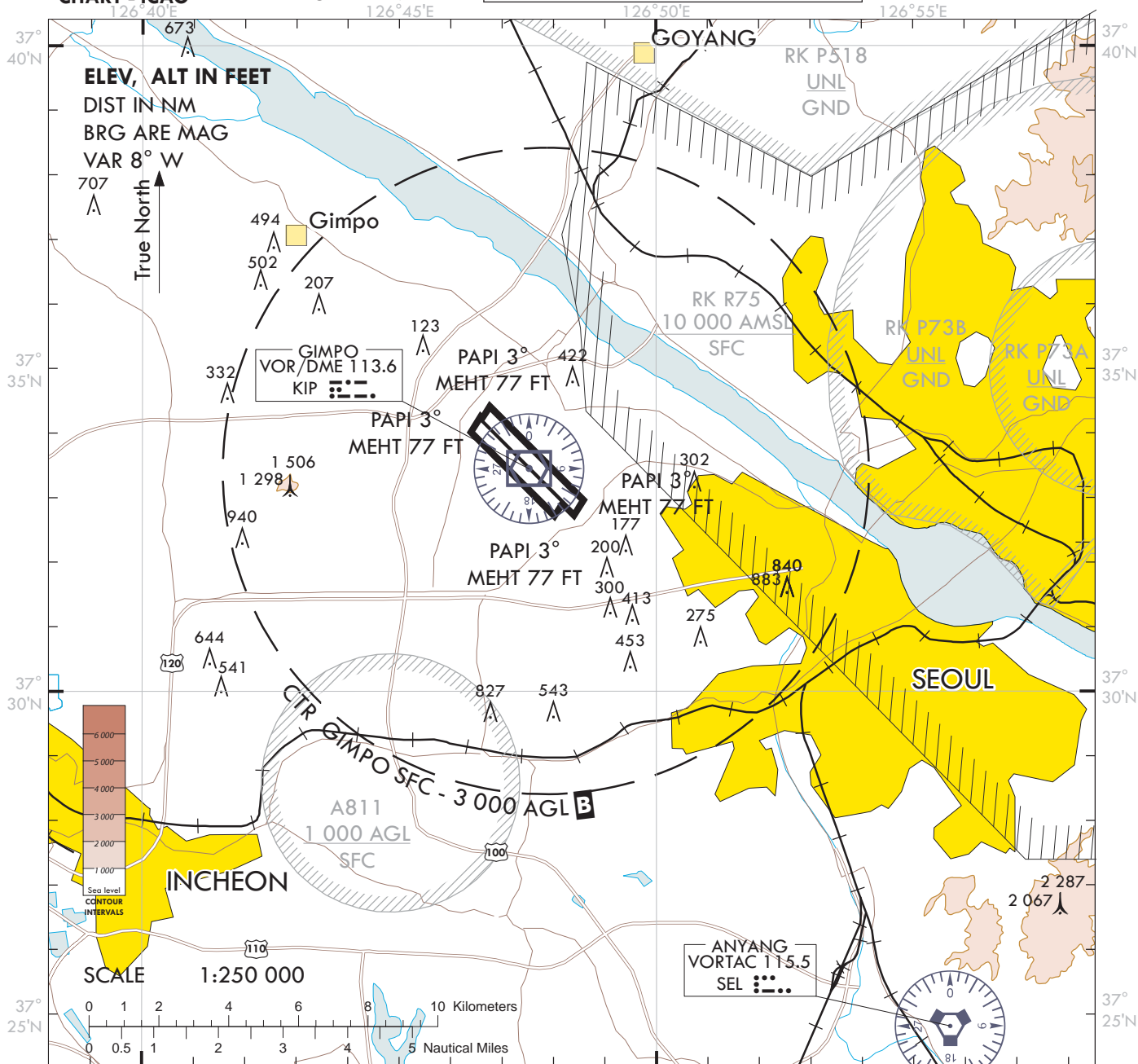


Visual
APPROACH
CHART - ICAO

AD ELEV: 59 ft
HEIGHTS RELATED
TO AD ELEV

SEOUL	APP	119.75	121.35	119.1	119.9	305.7
	DEP	119.05	125.15	124.8	123.8	363.8
GIMPO	TWR	118.1	118.05	240.9		

SEOUL/Gimpo INTL



ATS Airspace Classifications

- Class B : Radius of Gimpo airports
 - Vertical limits
 - Within 5 NM including areas which are extended northbound from 373646N 1263926E - 373944N 1264310E - 373803N 1264518E - 373458N 1264142E, and southbound from 372840N 1264938E - 373036N 1265252E - 372907N 1265444E - 372652N 1265153E - 373646N 1263926E
 - Within 5 NM - 10 NM(1 000 ft AGL - 10 000 ft AMSL)
 - Within 10 NM - 20 NM(5 000 ft AGL - 10 000 ft AMSL)
 - * Class D : Airspace from above 10 000 ft AMSL to FL 200 within Seoul TMA, excluding Class B
 - Speed limits : 250 kt IAS or less below 10 000 ft AMSL
- Class E :
 - Vertical limits
 - Controlled Airspace from 1 000 ft above the surface or the sea level to FL 600 and less except Class A, B, C and D
 - Speed limits : 250 kt IAS or less below 10 000 ft AMSL

<Airspace Classification>

